

How to use Anatomy & Physiology Online From Primal Pictures

Thank you for using **Anatomy & Physiology Online** from Primal Pictures. Please find below a brief guide to the site to get you started.

Open your web browser and type www.primalonlinelearning.com into your address bar or browser search field. This will take you to the home page:



From here, please click on **LOGIN** in the top right.

This will take you to the login page. To log in to your subscription please type your username and password in the subscriber login fields shown here:



Subscriber Login

Username:

Password:

www.primalonlinelearning.com
THE FUTURE OF MEDICAL EDUCATION

PRIMAL

Your subscription

You should now be at the titles page:



If you wish to change your password, you can do so by clicking on **My Profile** and amending your details.

Important

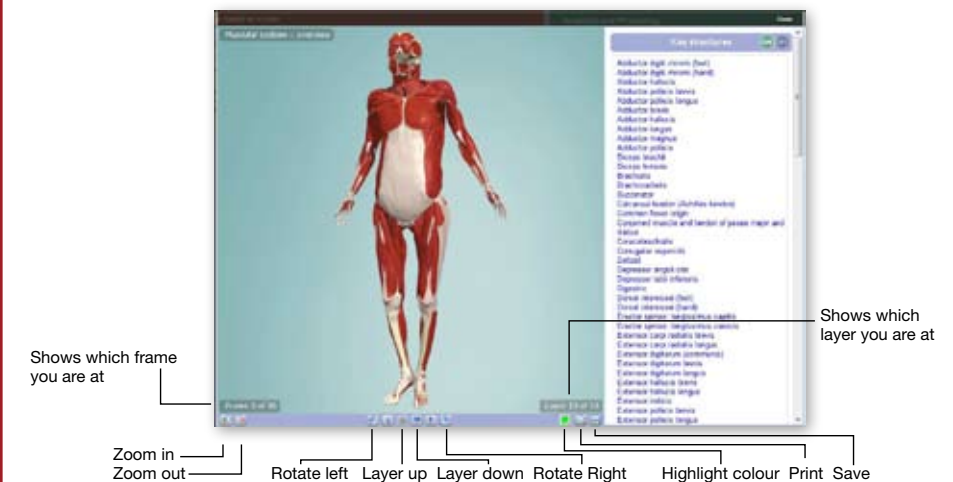
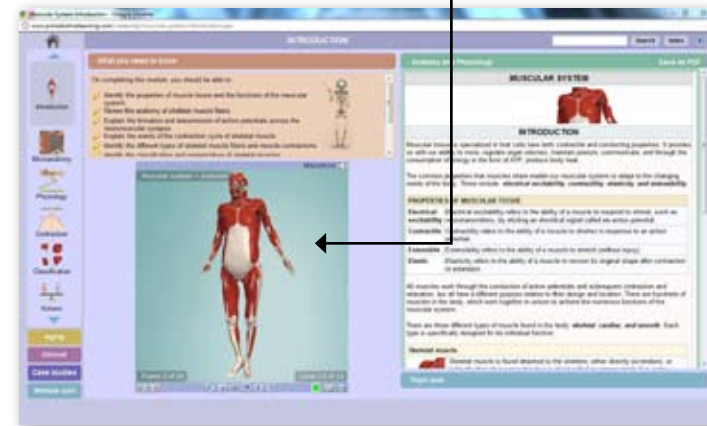
Please ensure you use the **LOG OUT** button (located in the top right of the home page) to end your session or you may not be able to login again until after the time out period (default time out is 15 minutes).



To enter one of the 19 modules, simple click on the one you would like to look at. The module will appear in a new window. The module window is explained in the centre spread.

Main viewing window

One of the features is the main viewing window. You can maximize this using the icon in the top right.



Holding your mouse over a structure will bring up a label. Clicking on that structure will highlight it.



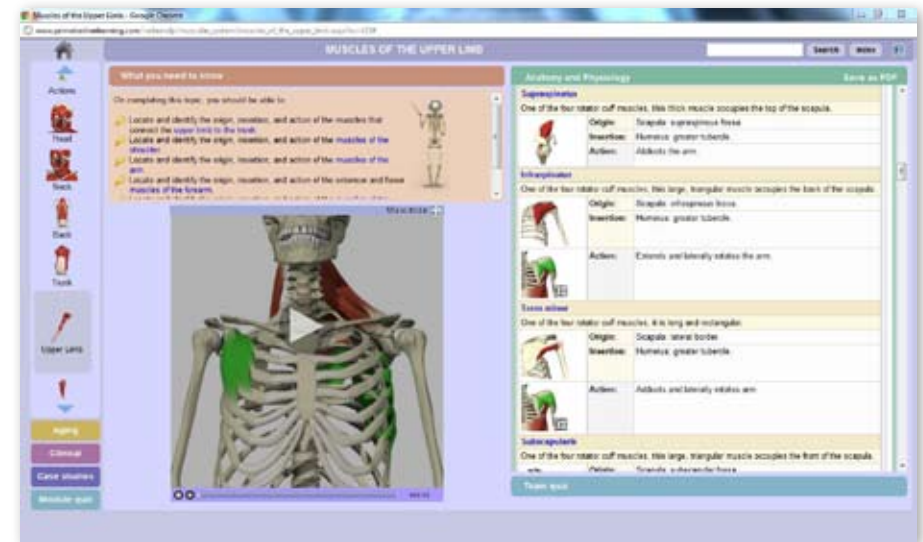
Clicking on the rotation controls will allow you to find the angle that you would like.



Clicking on the layer up and layer down buttons adds or removes structures.



Where a thumbnail image (scaled down small image in the Anatomy and Physiology section) has a play icon, clicking on this will bring up an animation in the main viewing window.



Click on the Play icon the view the animation.

Module Window

To return to the title page, simply close the module page window in the top right (for a PC - top left for a Mac).

The screenshot shows a web browser window titled 'MUSCLES OF THE HEAD' with the URL 'http://www.primaonlinelearning.com/cedaandp/muscular_system/muscles_of_the_head.aspx?ic=98#'. The page is divided into several sections:

- Left sidebar:** A vertical menu with icons for 'Microanatomy', 'Physiology', 'Contraction', 'Classification', 'Actions', and 'Head'. Below these are buttons for 'Aging', 'Clinical', 'Case studies', and 'Module quiz'.
- Top center:** A section titled 'What you need to know' with learning objectives. One objective is highlighted in blue: 'Locate and identify the origin, insertion, and action of the muscles of the scalp and forehead.' Below this is a 3D anatomical model of a skull with muscles highlighted in red.
- Right side:** An 'Anatomy and Physiology' section titled 'SCALP AND FOREHEAD' with a 'Save as PDF' button. It lists muscles like 'Occipitofrontalis' (with 'Frontal belly' and 'Occipital belly' sub-sections) and 'Corrugator supercilii'. Each muscle entry includes a thumbnail image, origin, insertion, and action.
- Bottom:** A 'Topic quiz' section with a 'Quiz with questions about this topic' button.

Annotations with arrows point to various features:

- 'Brings up the getting started window which includes a tutorial video' points to the home icon in the top left.
- 'Learning objectives (if these are in blue, then they are hyperlinked)' points to the blue-highlighted objective in the 'What you need to know' section.
- 'Search window' points to the search bar in the top right.
- 'Index with pronunciation guide' points to the 'Index' button in the top right.
- 'Brings up help section' points to the help icon in the top right.
- 'Allows you to save section as a printable PDF' points to the 'Save as PDF' button.
- 'Anatomy and Physiology section (clicking on any thumbnail image will bring up that image in the main viewing window)' points to a thumbnail image in the 'Anatomy and Physiology' section.
- 'Brings up section on aging' points to the 'Aging' button.
- 'Brings up section with clinical relevance' points to the 'Clinical' button.
- 'Brings up related case studies' points to the 'Case studies' button.
- 'Quiz with questions about the whole module' points to the 'Module quiz' button.
- 'Main viewing window' points to the 3D anatomical model.
- 'Quiz with questions about this topic' points to the 'Topic quiz' button.

Narrated Animations

Clinical, Case Studies and Aging

Challenging physiological subjects have been made into narrated animations. These are identified with larger images in the Anatomy & Physiology section that have a play icon in the corner. Clicking on one of these will bring it up in the main viewing window.



These are best viewed if maximized. Please ensure you have speakers or headphones attached to hear the narration.



In the bottom left of the module window there are buttons that will take you to other content within the module.

Aging

Clicking on the **Aging** button brings up a section on the effects aging to the system you are using.



Clinical

Clicking on the **Clinical** button brings up a section providing clinical examples and relevance.



Case Studies

Clicking on the **Case Studies** button brings up a section with related case studies which allows you to apply your knowledge and reveal the answer.



All of these sections can be saved as a printable PDF.

Quizzing

Index with Pronunciation Guide and Search

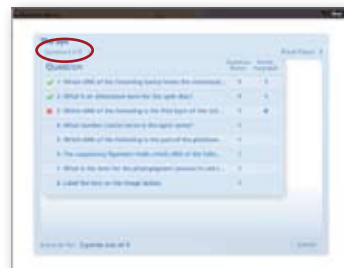
Clicking on the **Topic quiz** button in the bottom right will bring up a range of questions about that particular topic.



Clicking on the **Module quiz** in the bottom left will bring up a range of questions about the entire module.



Select your answer and then click on the Submit button to progress. You will be told immediately if you are correct.



Clicking on the highlighted button will confirm your progress.

Clicking on the **Index** button in the top right of the module window will bring up an alphabetical Index. Clicking on a word or phrase will take you to that part of the module. Click on the sound icon to the right of the word and you will hear a standard pronunciation.



To search within the module, type what you are looking for in the search window in the top right and click on **Search** – you will then be presented with this window:



To search the entire product, go to the home page and click on **Search your subscription**.



Type in what you are looking for and click on **Search**. This will tell you where to find what you are looking for.



Use of Images and Technical Requirements

Non commercial use of the images is royalty free - so for private educational use in PowerPoint presentations, lectures and patient education. **IMAGES MAY NOT BE USED IN THE PUBLIC DOMAIN WITHOUT PERMISSION.**

Any commercial or public domain use of the images including in books, websites, videos, DVD's and any other use of the images in the public domain (e.g. advertising) will be subject to formal permission and an additional license – please contact Primal Pictures with any queries.

PLEASE NOTE – The images look fantastic in presentations however they are not print resolution above 7cm x 7cm.

Technical Specification

Requires an internet connection.

Recommended web browsers:

Internet Explorer 7 + (Windows)

Firefox 2 (on Windows)

Safari (Mac)

Chrome

Please note you may need to allow pop-ups in your web browser to view all the content.

The process varies from browser to browser but here is a guide for the recommended browsers:

Internet Explorer:

Under “Tools” in the menu toolbar, choose “Pop-up Blocker”, Choose “Popup Blocker Settings” and enter **www.primalonlinelearning.com**.

Mozilla Firefox:

Under “Tools” in the toolbar choose “Options” and click “Web Features” in the left hand column. If the “Block Popup Windows” option is clicked, Click the “Allowed sites” button and enter **www.primalonlinelearning.com** in the textbox and click allow.

Head Office

Primal Pictures Ltd

4th Floor Tennyson House, 159-165 Great Portland Street, London W1W 5PA. United Kingdom

Telephone: +44 (0) 20 7637 1010 Fax: +44 (0) 20 7636 7776 USA FAX: 1-415 366 1679

Email: sam@primalpictures.com URL: www.primalpictures.com